



MODEL HCMX – HOT / COLD WATER MIXING UNIT

Description:

ARCHON Mixing Stations have been engineered for maximum reliability and operator safety. Using the proportional flow water control valves, the operator can adjust the mixing station to deliver the desired hot water temperature as indicated on the dial thermometer located in the mixed water discharge.

Features:

- Easily maintained
- No special tool kits needed
- Manually operated flow proportioning control valves
- Check valves provided on both the hot and cold water connections to prevent back-flow.
- Discharge liquid temperature gauge
- Outlet liquid temperature indicating dial gauge
- Simple wall mounting design for easy installation
- Stainless steel hose rack for convenient hose storage



Operating conditions:

All units have a maximum allowable pressure of 125 psig.

Materials:

Body castings: C87600 "Lead-Free" Bronze or CF8M 316 SS.

Seals: PTFE and Viton.

Connections:

Inlet and outlet connections: 3/4" NPT Female

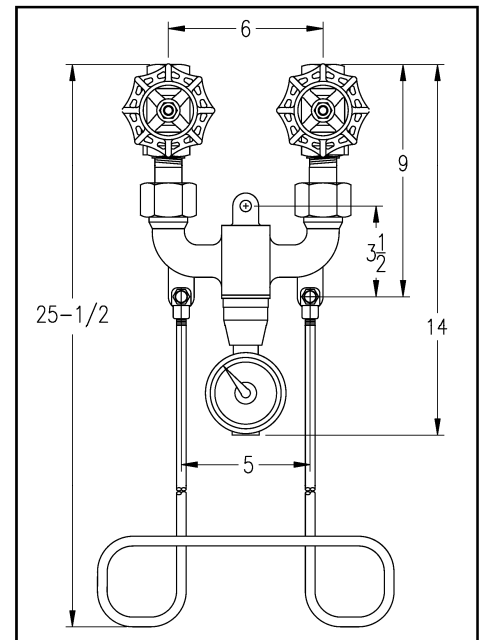
Configurations:

HCMX-BR: Bronze with globe valves

HCMX-SS: Stainless steel with globe valves

HCMX-BR-BV: Bronze with ball valves

HCMX-SS-BV: Stainless steel with ball valves



Recommended Water Pressure psig	Maximum recommended discharge temperature	Outlet flow rate gpm
30—125	200°F	2.5—11

Contact ARCHON for additional material options, temperature ratings or special configurations.