



MODEL AKGCL– CLAMP-ON SIGHT FLOW INDICATOR

Description:

The model AKG-CL is a clamp-on full view sight flow indicator. It provides full 360 degree viewing of process media and is designed to provide maximum visibility of system fluid. End connections are standard clamp-on type, sanitary design; ideal for the food, beverage, pharmaceutical and general processing industry. This unit is best suited for vertical applications but horizontal mounting is allowed when no mechanical force is exerted on the glass cylinder. Standard clamp sizes range from 1" through 6". Standard end flange material is 316L SS, with other materials available as an option.

Operating conditions:

Standard units are designed for full vacuum and pressure ratings as shown in the table below. Temperature rating is 350°F, but may be less based on gasket material selection.

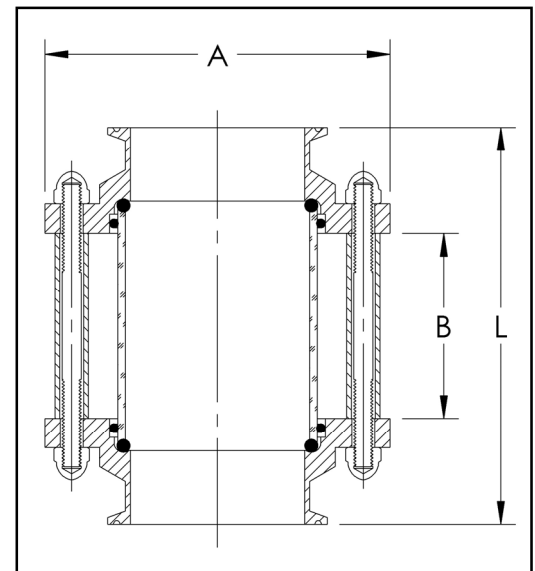
Options and accessories:

AKGCL sight flow indicators can be supplied with the following options and accessories:

- Impact resistant protective shield is optional.
- Non-standard overall lengths (either shorter or longer) are available.



Clamp Size	"A"	"B"	"L"	Max. Pressure
1.0"	3.14"	2.8"	5-1/2"	200
1.5"	3.72"	2.8"	5-1/2"	120
2.0"	4.63"	2.6"	5-1/2"	100
2.5"	5.13"	3.5"	6-1/2"	100
3.0"	5.63"	3.0"	6-1/2"	100
4.0"	6.94"	3.0"	6-1/2"	70
6.0"	11.0"	7.8"	12-1/4"	45



Ordering Information:*

Model: AKGCL		<input type="text"/>	-	<input type="text"/>	<input type="text"/>	<input type="text"/>	<input type="text"/>	<input type="text"/>	<input type="text"/>	<input type="text"/>
Size:	End Flange:	Seal Gasket:	Sight Tube:	Accessories:	Manufacturer:	Configuration:				
10: 1.0"	30: 3.0"	B: 304 SS	A: Borosilicate	Per order	A: ARCHON	Blank: Standard				
15: 1.5"	40: 4.0"	C: 316L SS	C: Quartz	0: None		A—T: Special				
20: 2.0"	60: 6.0"	G: AL6XN®	E: Acrylic	R: Acrylic safety shield		U: USP Class VI				
25: 2.5"		H: Alloy C22				Seals (available in some materials)				
		J: Alloy C276								
		K: Alloy 20								

*Contact ARCHON for additional material options, temperature ratings or special configurations.